



Together for a brighter future

# Investing in Withernsea 2017 - 2020

# What is it?



A mechanism that will invest in groups and individuals who can champion ideas focused on the Withernsea Big Local outcomes

“By 2015 we want to see a Withernsea where all people...



Enjoy a clean and attractive environment



benefit from a thriving and enterprising local economy



Enjoy active, healthy lives



Benefit from being part of a leaning community



Live in an active, strong, fair and united community

We are looking for committed and passionate people and groups, who can help make this happen by willing to learn, share and grow their great ideas.

To find out more  
keep reading...

## What support is available?

The Community Link Worker will be the first point of contact; a great opportunity to talk through your idea before putting pen to paper.

The Link Worker will also give some pointers about other opportunities, suggest links with similar work that is already going on.

We may explore:

identifying similar work in the area  
additional support needed  
help with setting up your group

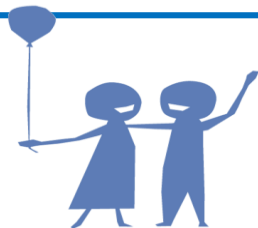


## Who can apply?

Applications can be made by either:

- Individuals
- Community groups
- Charitable organisations
- Partnerships

A social enterprise would be accepted but will need to be checked how any profit generated will benefit the Withernsea Community.



## What cannot be funded?

- Political activity
- The furtherance of religion
- Services which are or should be provided by statutory services
- Activities for beneficiaries who live outside Withernsea



### **How will requests for support be assessed?**

Support will be given by the Community Link Worker to understand the process.

However the Worker does not have decision making powers on the assessment panel.

The IIW investment panel are all local resident members. Partners may be co-opted if a proposal appears to be technical.

The panel uses scoring criteria that will check how your idea is:

- Focused on our outcomes and vision
- Deliverable and safe
- Community led
- Value for money
- Complementary to other activities

### **How Much?**

The steering group agreed to designate a value within the plan for Investing in Withernsea, which cover a number of funding streams within Withernsea Big Local, but decided not to set a value for applying groups and individuals.

They felt a set value per application may restrict idea, or wrongly suggest a value for groups to apply for. Therefore ideas should work to the budget that is needed.

The Community Link Worker will offer support to help plan these budgets and may also explain how the idea could be delivered in stages and/or attract money from elsewhere.

The panel anticipate some ideas may only need start-up costs to further generate community interest. Other ideas might need the purchase specialist support to enable them to achieve their goals, for example specialised training. However if it appears to be a major investment, the panel may need to consider the need for a feasibility study or another support model e.g. social loans.

## Frequently asked questions & ideas...

Please take a look at the Withernsea Big Local website to see all submitted questions and answers.

[www.WithernseaBigLocal.co.uk](http://www.WithernseaBigLocal.co.uk)

Resident ideas shared during the visioning process are also on the website.

Some of these ideas require major investment and therefore may not be achievable within the short term.



All ideas should be supported by a **champion** that is passionate and willing to **take things forward**.

Investing in Withernsea Panel and the Withernsea Big Local Steering Group will be there to support and guide NOT deliver submitted ideas.

For more information or to keep in touch...



@WithsBigLocal



[www.facebook.com/withernseabiglocal](http://www.facebook.com/withernseabiglocal)



[info@WithernseaBigLocal.co.uk](mailto:info@WithernseaBigLocal.co.uk)

The Social Investment Fund supported by:

Local Trust | Big Local

